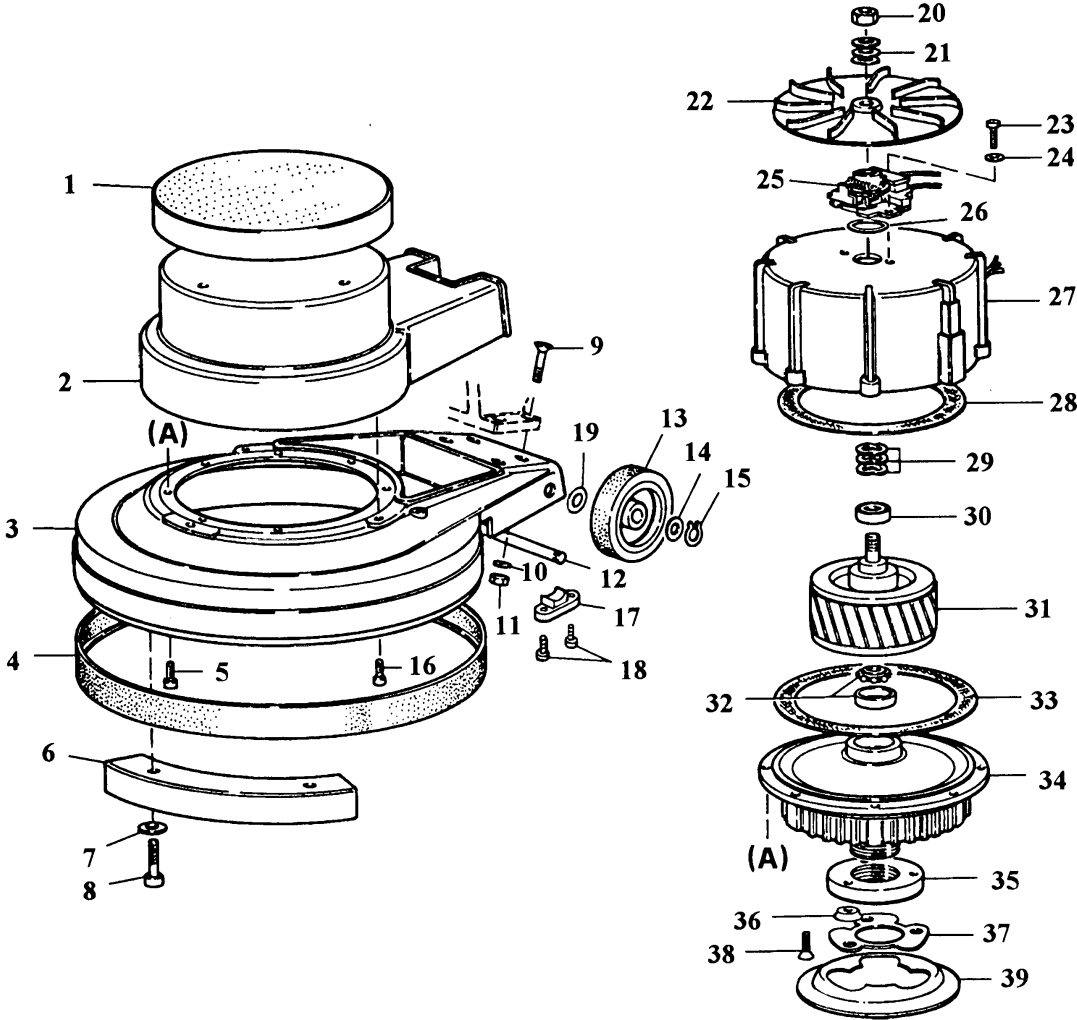


FLOORPUL INTERNATIONAL N.V.

C 43



FLOORPUL INTERNATIONAL N.V.

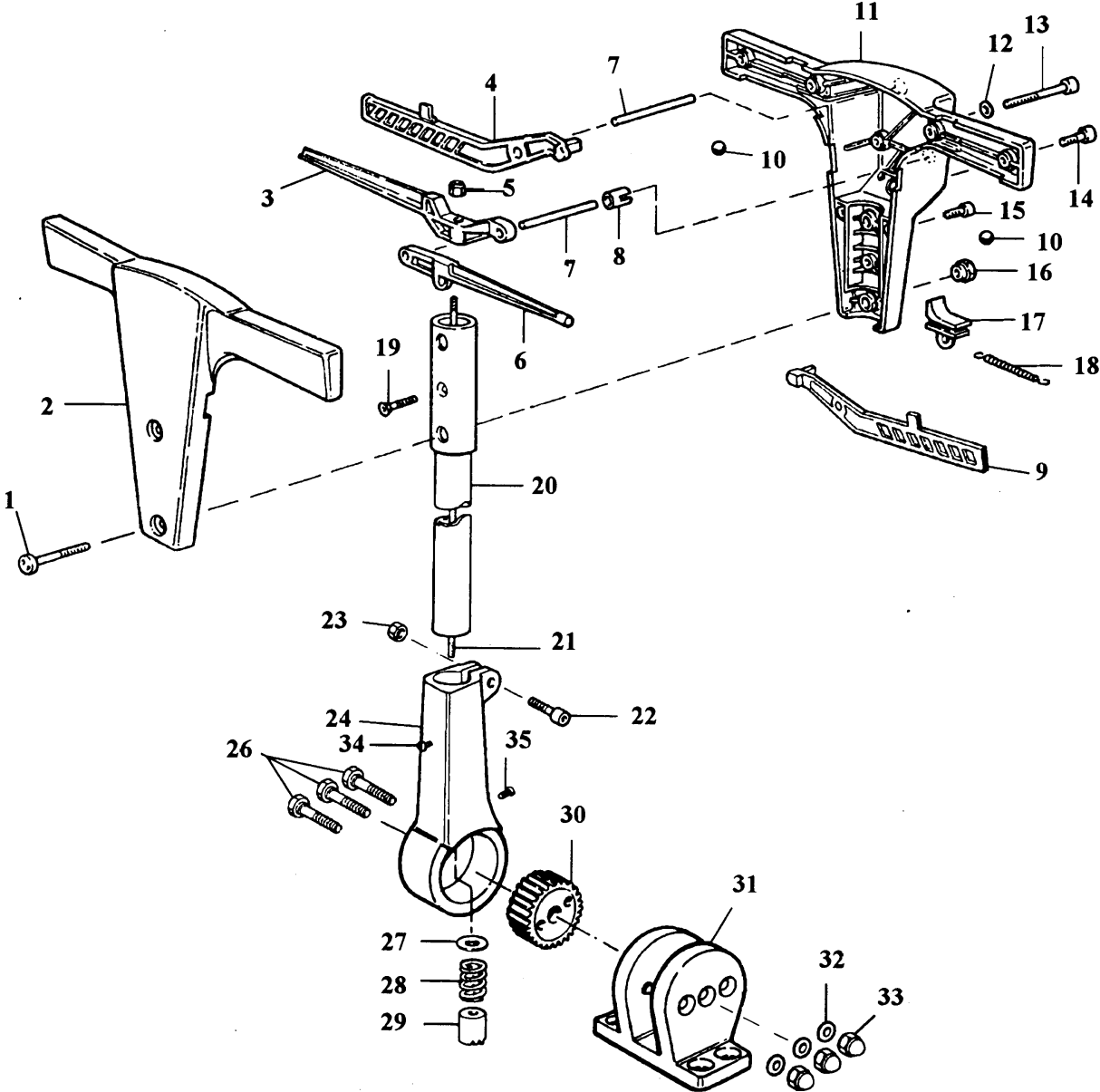
POS.	REF.	Assy.	N.O.	Omschrijving	Description	Description	Umschreibung	Descripción
1	15-225	A	1	Deksel	Couvercle supérieur	Top cover	Top cover	Cubierta superior
2	15-226	A	1	Motor huis	Couvercle moteur	Motor housing	Motor housing	Compartimiento del motor
3	14-118	A	1	Basisplaat	Base machine	Base casting	Base casting	Pieza de base
4	16-375	A	1	Stootrubber	Pare-choc	Rubber buffer	Rubber buffer	Amortiguador de caucho
5	13-911	A	8	Schroef M6 x 25	Vis M6 x 25	Screw M6 x 25	Screw M6 x 25	Tornillo M6 x 25
6	14-119	A	1	Tegen gewicht	Contre poids	Counter weight	Counter weight	Contrapeso
7	13-931	A	2	Rondsel 8 x 24	Rondelle 8 x 24	Washer 8 x 24	Washer 8 x 24	Arandela 8 x 24
8	13-932	A	2	Schroef M8 x 18	Vis M8 x 18	Screw M8 x 18	Screw M8 x 18	Tornillo M8 x 18
9	13-933	A	4	Schroef M8 x 30	Vis M8 x 30	Screw M8 x 30	Screw M8 x 30	Tornillo M8 x 30
10	13-934	A	4	Rondsel getand diam.8	Rondelle crantée diam.8	Washer diam.8	Washer diam.8	Arandela diám.8
11	13-935	A	4	Moer M8	Ecrou M8	Nut M8	Nut M8	Tuerca M8
12	14-120	A	1	Wielas	Axe de roue	Wheel axle	Wheel axle	Eje de rueda
13	19-251	A	2	Wiel	Roue	Wheel	Wheel	Rueda
13	19-251.NEW	A	2	Wiel nieuw model	Roue nouveau modèle	Wheel new model	Wheel new model	Rueda modelo nueva
14	13-936	A	2	Rondsel	Rondelle	Washer	Washer	Arandela
15	13-937	A	2	Borgveer diam.12	circlips diam.12	Cirelip diam.12	Cirelip diam.12	Anillo de seguridad diám.12
16	13-938	A	4	Schroef M5 x 20	Vis M5 x 20	Screw M5 x 20	Screw M5 x 20	Tornillo M5 x 20
17	15-135	A	2	Asbevestiging	Fixation axe de roue	Axle retainer	Axle retainer	Retén de eje
18	13-007	A	4	Schroef 4,8 x 13	Vis 4,8 x 13	Screw 4,8 x 13	Screw 4,8 x 13	Tornillo 4,8 x 13
19	13-008	A	2	Rondsel diam.12	Rondelle diam.12	Washer diam.12	Washer diam.12	Arandela diám.12
20	13-939	A	1	Moer	Ecrou	Nut	Nut	Tuerca
21	13-940	A	1	Veer rondsel	Rondelle de pression	Washer	Washer	Arandela
22	14-121	A	1	Koelschroef	Ventilateur	Cooling fan	Cooling fan	Ventilador de enfriamiento
23	13-970	A	2	Schroef M4 x 12	Vis M4 x 12	Screw M4 x 12	Screw M4 x 12	Tornillo M4 x 12
24	13-971	A	2	Rondsel	Rondelle	Washer	Washer	Arandela
25	12-378	A	1	Schakelaar centrifugaal	Interrupteur centrifugal	Sarter switch	Sarter switch	Interruptor de arranque
26	15-138	A	1	Isolatie ring	Anneau d'isolation	Insulation plate	Insulation plate	Placa de aislamiento
27	11-025	A	1	Stator	Stator	Stator housing	Stator housing	Compartimiento del estator
28	11-030	A	1	Isolatie ring	Anneau d'isolation	Insulation plate	Insulation plate	Placa de aislamiento
29	13-941	A	2	Veer rondsel	Rondelle de pression	Wavey washer	Wavey washer	Arandela ondulada
30	ER.6002-2RS	A	1	Lager	Roulement	Bearing	Bearing	Cojinete 6002-2RS

FLOORPUL INTERNATIONAL N.V.

31	11-028	A	1	Rotor	Rotor	Rotor	Rotor	Rotor
32	11-029	A	1	Lager E20	Roulement E20	Bearing E20	Bearing E20	Cojinete E20
33	11-030	A	1	Isolatie ring	Anneau d'isolation	Insulation plate	Insulation plate	Placa de aislamiento
34	14-122	A	1	Reduktiekast compleet	Reduction complet	Gear box assy.	Gear box assy.	Conjunto de la caja de engranajes
35	14-125	AB	1	Aandrijfkring	Anneau de traction	Drive hub	Drive hub	Cubo de transmisión
36	15-121	AB	3	Tussenring	Entretoise	Spacer	Spacer	Separador
37	14-133	AB	1	Flenshouder	Support flasque	Drive hub plate	Drive hub plate	Placa del cubo de transmisión
38	13-807	AB	3	Schroef M8 x 20	Vis M8 x 20	Screw M8 x 20	Screw M8 x 20	Tornillo M8 x 20
39	14-840		1	Flens	Flasque	Drive plate	Drive plate	Placa de transmisión
				<i>Samengestelde onderdelen</i>	<i>Pièces composées</i>	<i>Assembly's</i>	<i>Assembly's</i>	
A	17-421		1	Machine blok compleet	Bloc machine complet	Machine bloc complete	Machine bloc complete	Bloque de máquina completo
B	17-432		1	Aandrijfsysteem compleet	Système de traction complet	Traction system complete	Traction system complete	Sistema de tracción completo

FLOORPUL INTERNATIONAL N.V.

C 43



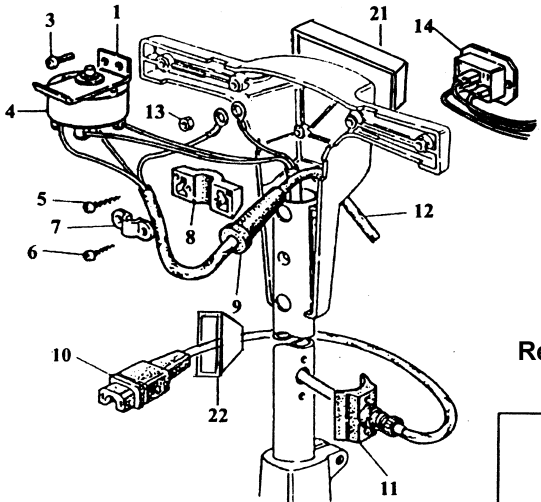
FLOORPUL INTERNATIONAL N.V.

POS.	REF.	Assy.	N.O.	Omschrijving	Description	Description	Umschreibung	Descripción
1	13-901	ABC	2	Schroef speciaal	Vis spéciale	Cover screw	Cover screw	Tornillo de cubierta
2	15-425	AB	1	met referentie 11=Handvat compleet	avec réf. 11=Manette complet	with ref. 11=complete grif	with ref. 11=complete grif	Empuñadura completa (2 pc)
3	15-426	AB	1	Verstelhendel	Manette réglage manche	Handle adjustment lever	Handle adjustment lever	Palanca de ajuste de mango
4	15-427	AB	1	Schakel hendel, rechts	Manette de mise en marche droite	Switch lever , right	Switch lever , right	Palanca de interruptor, derecha
5	13-902	ABC	1	Moer, zelfborgend M5	Écrou autobloccant M5	Adjustment nut	Adjustment nut	Tuerca de ajuste
6	15-428	AB	1	Hendel voor tank	Manette pour réservoir	Fluid control lever	Fluid control lever	Palanca de control de líquido
7	13-903	AB	3	Pin	Axe	Pin	Pin	Pasador
8	15-429	AB	1	Afstandsbus	Entretoise	Spacer	Spacer	Separador
9	15-232	AB	1	Schakel hendel, links	Manette de mise en marche gauche	Switch lever , left	Switch lever , left	Palanca de interruptor, izquierda
10	14-032	AB	1	Kogel	Bille	Steel ball	Steel ball	Bola de acero
11	15-425	AB	1	met referentie 2=Handvat compleet	avec réf. 2=Manette complet	with ref. 2=complete grif	with ref. 2=complete grif	Empuñadura completa (2 pc)
12	13-891	AB	2	Rondsel	Rondelle	Washer	Washer	Arandela
13	13-906	ABC	2	Schroef M6 x 60	Vis M6 x 60	Cover screw M6 x 60	Cover screw M6 x 60	Tornillo de cubierta M6 x 60
14	13-907	ABC	4	Schroef M6 x 16	Vis M6 x 16	Cover screw M6 x 16	Cover screw M6 x 16	Tornillo de cubierta M6 x 16
15	13-908	ABC	2	Schroef M5 x 30	Vis M5 x 30	Cover screw M5 x 30	Cover screw M5 x 30	Tornillo de cubierta M5 x 30
16	13-909	ABC	2	Moer speciaal	Écrou spécial	Cover nut	Cover nut	Tuerca de cubierta
17	15-431	AB	2	Veiligheidsknop	Bouton de sécurité	Safety interlock lever	Safety interlock lever	Palanca de interbloqueo de seguridad
18	14-259	AB	2	Veer	Ressort	Spring	Spring	Muelle
19	13-910	A	1	Schroef	Vis	Screw	Screw	Tornillo
20	14-258	A	1	Steel	Manche	Handle down tube	Handle down tube	Tubo diagonal del manillar
21	14-257	A	1	Trekstang	Tige	Pull rod	Pull rod	Varilla de tracción
22	13-911	AD	1	Schroef M6 x 25	Vis M6 x 25	Screw M6 x 25	Screw M6 x 25	Tornillo M6 x 25
23	13-604	AD	1	Moer M6	Écrou M6	Nut M6	Nut M6	Tuerca
24	14-256	AD	1	Verbindingsstuk steel/voet	Connection manche/pied	Selector casing	Selector casing	Carcasa de selector
26	13-914	AD	3	Schroef M8 x 60	Vis M8 x 60	Pivot bolt M8 x 60	Pivot bolt M8 x 60	Perno
27	13-915	A	1	Rondsel	Rondelle	Washer	Washer	Arandela
28	14-255	A	1	Veer	Ressort	Selector spring	Selector spring	Muelle
29	14-254	A	1	Plunjer	Piston	Selector plunger	Selector plunger	Émbolo del selector

FLOORPUL INTERNATIONAL N.V.

30	14-252	AD	1	Tandrad	Roue dentée	Selector gear	Selector gear	Engranaje selector
31	14-240	AD	1	Voet	Pied	Pivot bracket	Pivot bracket	Soporte de pivote
32	13-882	AD	3	Rondsel diam.8	Rondelle diam.8	Pivot bolt washer diam.8	Pivot bolt washer diam.8	Arandela
33	13-015	AD	3	Blinde moer M8	Ecrou spécial M8	Domed nut M8	Domed nut M8	Tuerca abovedada
34	13-011	AD	1	Pin 3 x 10	Pin 3 x 10	Retaining pin 3 x 10	Retaining pin 3 x 10	Tornillo
35	13-012	AD	1	Schroef M4 x 16	Vis M4 x 16	Screw M4 x 16	Screw M4 x 16	Tornillo
				<i>Samengestelde onderdelen</i>	<i>Pièces composées</i>	<i>Assembly's</i>	<i>Assembly's</i>	
A	17-420		1	Hendel compleet C 43	Manche complet C 43	Complete Handle C 43	Complete Handle C 43	Mango completo C 43
B	17-431		1	Handvat compleet C 43	Manette complet C 43	Comlete grif C 43	Comlete grif C 43	Empuñadura completa C 53
C	17-354		1	Set schroeven voor handvat	Serie de vis pour manette	Kit screws for frif	Kit screws for frif	Kit de tornillos para empuñadura
D	17-438		1	Voet compleet	Pied complet	Complete Selector	Complete Selector	Selector completo

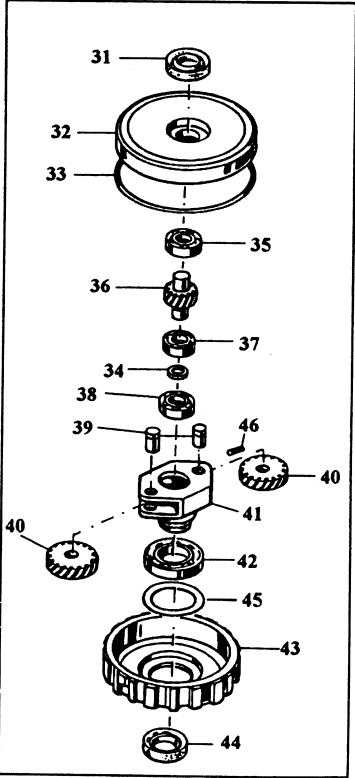
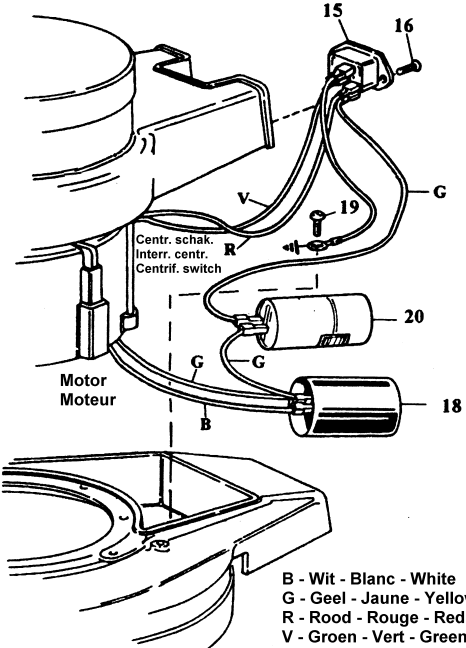
FLOORPUL INTERNATIONAL N.V.



P3

C 43

Reduktiekast - Reducteur
Reduction gear



B - Wit - Blanc - White
G - Geel - Jaune - Yellow
R - Rood - Rouge - Red
V - Groen - Vert - Green

FLOORPUL INTERNATIONAL N.V.

POS.	REF.	Assy.	N.O.	Omschrijving	Description	Description	Umschreibung	Descripción
1	13-919		2	Schroef	Vis	Screw	Screw	Tornillo
2	13-003		2	Rondsel	Rondelle	Washer	Washer	Arandela
3	12-108		1	Schakelaar	Interruteur	Switch	Switch	Interruptor
4	13-004 *		1	Set van 6 stukken, aardingsbevestiging	Serie de 6 pcs. Mise à la terre	Set of 6pcs. Earth connections	Set of 6pcs. Earth connections	Conjunto de 6 unidades Conexiones a tierra
5	13-922		2	Schroef 4 x 20	Vis 4 x 20	Screw 4 x 20	Screw 4 x 20	Tornillo
6	13-923		2	Schroef 4 x 20	Vis 4 x 20	Screw 4 x 20	Screw 4 x 20	Tornillo
7	12-109		1	Kabelklem	Fixation cable	Cable clamp	Cable clamp	Abrazadera de cables
8	12-110		1	Kabel bruggetje	Pont	Holder	Holder	Soporte
9	12-118		1	Kabeldoorvoer	Passe-cable	Cable grommet	Cable grommet	Arandela aislante de cable
10	12-112		1	Netkabel 3x1,5mm²x12m.	Cable d'alimentation 3x1,5mm²x12m.	Main cable 3x1,5mm²x12m.	Main cable 3x1,5mm²x12m.	Cable principal 3x1,5mm²x12m.
11	12-111		1	Kabeltje met stekker	Cable avec prise	Cable + straight connector	Cable + straight connector	Cable + conector recto
12	12-103		1	Kabeldoorvoer	Passe-cable	Cable support	Cable support	Soporte de cable
14	12-114		1	Stopcontact	Prise	Angular socket	Angular socket	Zócalo angular
15	12-106		1	Voedingscontact	Prise d'alimentation	Inlet socket	Inlet socket	Zócalo de entrada
16	13-926		4	Schroef M3 x 10	Vis M3 x 10	Screw M3 x 10	Screw M3 x 10	Tornillo M3 x 10
17	13-927		4	Moer M3	Ecrou M3	Nut M3	Nut M3	Tuerca M3
18	12-121		1	Condensator 98 uF	Condensateur 98 uF	Capacitor 98 uF	Capacitor 98 uF	Condensador 98 uF
19	13-951		1	Aardingsschroef M5 x 10	Vis M5 x 10	Screw M5 x 10	Screw M5 x 10	Tornillo para soporte
20	12-117		1	Condensator 16 uF	Condensateur 16 uF	Capacitor 16 uF	Capacitor 16 uF	Condensador 16 uF
20a	14-117		1	Houder condensator	Support condensateur	Capacitor holder	Capacitor holder	Soporte de condensador
20b	13-951		1	Schroef voor houder	Vis pour support	Screw for holder	Screw for holder	Tornillo para soporte
31	16-105		1	Dichtingsring	Joint spie	oil seal	oil seal	sello de aceite
32	14-170		1	Deksel reductiekast	Couvercle reducteur	Top cover	Top cover	Cubierta superior
33	16-100		1	O-ring M 181 x 2	Joint torique m 181 x 2	O-ring M 181 x 2	O-ring M 181 x 2	Junta tórica M 181 x 2
34	13-065		1	Rondsel, elastisch	Rondelle élastique	Elastic washer	Elastic washer	Arandela elástica
35	11-026		1	Lager E20	Roulement E20	Bearing E20	Bearing E20	Cojinete E20
36	14-187		1	Getande as	Axe dentée	Lay shaft	Lay shaft	Eje intermedio
37	19-305		1	Lager 16-004	Roulement 16-004	Bearing 16-004	Bearing 16-004	Cojinete 16-004

FLOORPUL INTERNATIONAL N.V.

38	19-300		1	Lager E15	Roulement E15	Bearing E15	Bearing E15	Cojinete E15
39	14-180		2	Pin	Axe	Gear shaft	Gear shaft	Eje de engranajes
40	15-230		2	Tandwiel diam. 80,9	Pignon diam. 80,9	Gear diam. 80,9	Gear diam. 80,9	Engranaje diám. 80,9
41	14-184		1	Tandwielhouder	Support pignons	Gear holder	Gear holder	Soporte de engranaje
42	19-310		1	Lager 16-011	Roulement 16-011	Bearing 16-011	Bearing 16-011	Cojinete 16-011
43	14-190		1	Getande carter	Carter crantée	Planetary box	Planetary box	Caja de planetario
44	16-110		1	Dichtingsring	Joint spie	oil seal	oil seal	sello de aceite
45	13-002		1	Rondsel	Rondelle	Washer	Washer	Arandela
46	13-010		2	Schroefje M4 x 10	Vis M4 x 10	Grub screw M4 x 10	Grub screw M4 x 10	Pasador prisionero M4 x 10